

# STRUCTURAL ENGINEERS

6950 SQUIBB RD, STE 230 • MISSION, KANSAS 66202

PHONE 913.677.9000  
FAX 913.677.9097

WWW.CEOSTRUCTURES.COM • CEOSE@CEOSTRUCTURES.COM

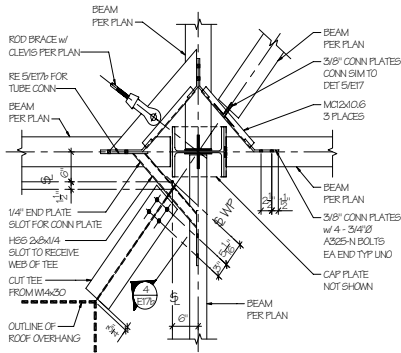
*"Part of the solution..."*

## CEO STRUCTURAL ENGINEERS IS

A STRUCTURAL ENGINEERING CONSULTING FIRM THAT PROVIDES CLIENT-CENTERED DESIGN SERVICES TO ARCHITECTURAL, CONTRACTING, FABRICATING AND ENGINEERING PROFESSIONALS. OUR FIRM STRIVES TO PROVIDE EXCEPTIONAL QUALITY IN CREATIVE AND GENERALLY SIMPLE SOLUTIONS TO STRUCTURAL DESIGN PROBLEMS, PRESENTED IN A CLEAN, HIGHLY ORGANIZED AND LOGICAL DRAWING STYLE. ON ANY PROJECT, REGARDLESS OF SIZE, WE CAN PROVIDE CLIENTS WITH TIME-SENSITIVE SOLUTIONS WITHOUT SACRIFICING ACCURACY OR COMPLETENESS.

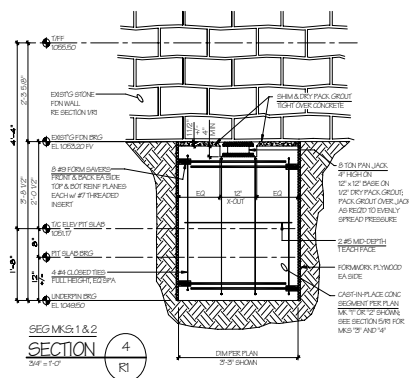
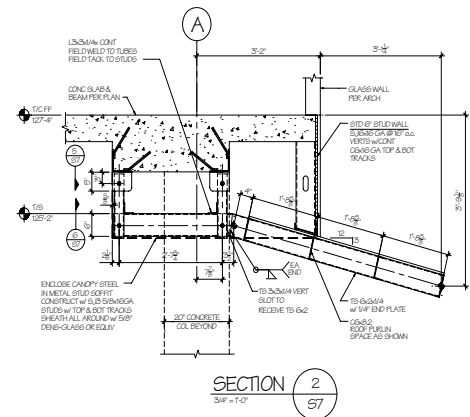
## CEO STRUCTURAL ENGINEERS SERVES

ARCHITECTS, DEVELOPERS, OWNERS, CONTRACTORS, FABRICATORS, DETAILERS AND OTHER PROFESSIONAL ENGINEERS, DESIGNING COMPLETE STATE-OF-THE-ART BUILDING STRUCTURES AND FOUNDATIONS, USING ANY AND ALL COMBINATIONS OF HEAVY AND LIGHT CONSTRUCTION MATERIALS. WE OFFER:



- INNOVATIVE USE OF STRUCTURAL MATERIALS, INCLUDING: CAST-IN-PLACE, POST-TENSIONED OR PRE-CAST CONCRETE, STRUCTURAL STEEL, ALUMINUM, MASONRY, TIMBER, AND LIGHT-GAGE METAL-STUD FRAMING.
- CREATIVE RENOVATION OF EXISTING STRUCTURES.
- CONSTRUCTION ENGINEERING INCLUDING: DESIGN OF SHORING, FORMWORK, AND EARTHWORK RETENTION.

- UNIQUE PROBLEM-SOLVING CAPABILITY, ALWAYS STRIVING TO MAKE SOLUTIONS SIMPLE, COST-EFFECTIVE AND EFFICIENT.
- QUALITY DESIGN OF ALL TYPES OF STRUCTURES AND FOUNDATIONS USING ANY OF THE BUILDING CODES, INCLUDING AMONG OTHERS: OFFICE BUILDINGS, HOSPITAL FACILITIES, COMMERCIAL STORES & RESTAURANTS, PARKING GARAGES, CHURCHES, AND RESIDENTIAL, INSTITUTIONAL AND EDUCATIONAL BUILDINGS.



- FORENSIC INVESTIGATION OF DAMAGED OR FAILED STRUCTURES.
- RESOLVING PROBLEMS CAUSED BY INEFFECTIVE CONSTRUCTION OR INCOMPLETE STRUCTURAL DESIGN OF OTHERS.
- DESIGN OF SUPPORT AND ENCLOSURE STRUCTURES FOR MECHANICAL AND INDUSTRIAL EQUIPMENT.
- FULL-SERVICE CONSTRUCTION ADMINISTRATION AND PROVIDER OF SPECIAL INSPECTIONS.
- DETAILING OF REINFORCING AND STEEL CONNECTIONS.
- LICENSED IN KANSAS, MISSOURI, COLORADO, IOWA, OHIO, NEBRASKA, OKLAHOMA, TENNESSEE, TEXAS, AND OTHER STATES.



# STRUCTURAL ENGINEERS

## CEO STRUCTURAL ENGINEERS APPROACHES

CONSULTING TWOFOLD: ONE, KNOWING THAT SEVERAL VIABLE SOLUTIONS EXIST FOR A GIVEN PROBLEM, AND TWO, REALIZING THAT ONE OF THESE IS OPTIMUM. OUR EXPERTISE IS CHOOSING A SOLUTION THAT MINIMIZES COST, MAXIMIZES EASE OF CONSTRUCTION, AND SATISFIES THE CLIENT.

IF PROBLEMS ARISE, **CEOSE** DOES NOT ABANDON THE PROJECT OR OUR CLIENT, BUT HELPS FIND RESOLUTION. OUR CONSTANT DESIRE TO BE *PART OF THE SOLUTION* SETS US APART FROM OTHER ENGINEERING CONSULTING FIRMS.

## OUR CLIENTS INCLUDE

MAJOR ARCHITECTURAL FIRMS IN KANSAS CITY, SUCH AS *FSL ARCHITECTS*, *TEVIS ARCHITECTURAL GROUP*, AND *ELDORADO INC.*; ENGINEERING FIRMS SUCH AS *NEEDHAM & ASSOCIATES* AND *PROFESSIONAL ENGINEERS*; GENERAL CONTRACTORS, SUCH AS *J.E. DUNN*, *TITAN CONSTRUCTION*, *EXCEL*, AND *HOFFMAN-CORTES*; SPECIALTY CONTRACTORS, SUCH AS *LG BARCUS & SONS* AND *WHP TRAINING TOWERS*; FABRICATORS SUCH AS *SOUTHWEST STEEL* AND *STRUCTURAL STEEL CONTRACT SERVICES*; AND LOCAL GOVERNMENTS SUCH AS *THE CITY OF LEAVENWORTH*.

WE ALSO SERVE CLIENTS REQUIRING IMMEDIATE ADVICE ON HOW TO MOVE A PROJECT FORWARD, HOW TO MAKE CONSTRUCTION MORE EFFICIENT, OR HOW A PARTICULAR CONSTRUCTION FAILURE MIGHT HAVE OCCURRED.

## REPEAT BUSINESS IS

A BIG PART OF OUR CLIENT BASE. CLIENTS FIND THAT WE ARE EASY TO WORK WITH, THOROUGH, TIMELY, PROFESSIONAL, AND HAVE A DEEP DESIRE TO BE THE BEST. THE MAJORITY OF NEW BUSINESS COMES TO THE COMPANY FROM RECOMMENDATIONS OF SATISFIED CLIENTS.

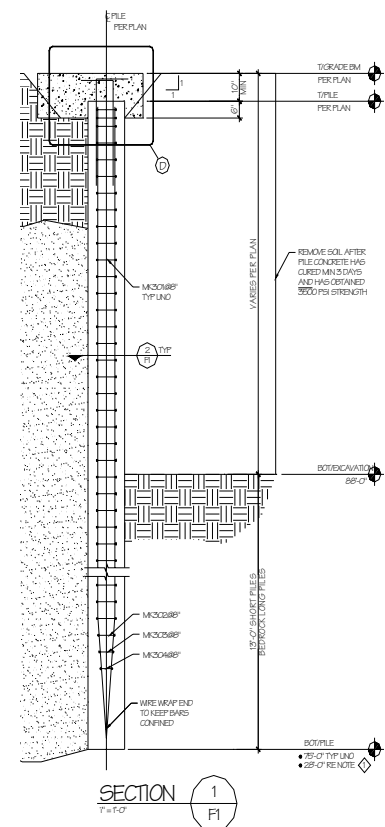
CLIENTS KNOW THEIR PROJECTS WILL RECEIVE OUR FULL DEDICATION AND SERVICE FROM DESIGN COMMENCEMENT TO COMPLETION OF CONSTRUCTION.

## CEOSE CURRENTLY EMPLOYS

SEVERAL TALENTED PEOPLE: A PE, 3 EITs, A CAD TECHNICIAN, AND A BUSINESS MANAGER. OUR PROFESSIONAL ENGINEER IS HIGHLY-TRAINED WITH 16 YEARS DESIGN EXPERIENCE. HE HAS A MASTERS OF SCIENCE DEGREE EMPHASIZING STRUCTURES AND HAS TAUGHT GRADUATE DESIGN COURSES. OUR STAFF ENGINEERS ARE HIGHLY EXPERIENCED WORKING IN A SMALL OFFICE, WHILE OUR CAD TECHNICIAN, WITH 8 YEARS EXPERIENCE, POSSESSES COMMON SENSE, SPEED, AND A STRONG DESIRE FOR ACCURACY. ALL ARE DEDICATED TO OUR PROFESSION AND TO SERVING OUR CLIENTS.

## CEO STRUCTURAL ENGINEERS

IS BUILT ON INTEGRITY. IF PROBLEMS ARISE, WE ARE THERE TO FIND A SOLUTION. WE ARE PROUD OF OUR REPUTATION FOR STANDING BY OUR CLIENTS TO SEE THE PROJECT THROUGH TO COMPLETION AND WANT TO BE *PART OF THE SOLUTION*.





# STRUCTURAL ENGINEERS

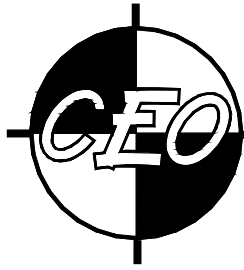
## SELECTED CEOSE PROJECTS

### 2006 PROJECTS

- EFFECTIVE PROJECT CORPORATION—UNIVERSITY OF UTAH—CO-GENERATION PLANT STRUCTURAL UPGRADE
- EFFECTIVE PROJECT CORPORATION—EXXON OIL Co. @ CHAD, AFRICA—DESIGN OF ELEVATED STEEL CABLE-TRAY FRAMES
- EFFECTIVE PROJECT CORPORATION—AQUILA @ NEVADA, MO—DESIGN PIPE BRIDGE & SUMP PLATFORM W/ CANOPY
- EFFECTIVE PROJECT CORPORATION—AQUILA @ St. JOSEPH, MO—ELEVATED STEEL PLATFORM TO SUPPORT 50000 LB DIESEL GENERATOR
- ENTERPRISE INTERIORS—MISSION WOODS COMPLEX @ MISSION RD & I-435—DESIGN METAL STUD CANOPIES
- ENVIRONS ARCHITECTS-PLANNERS—CANDLEWOOD SUITES @ OLATHE, KS—4-STORY TIMBER FRAME ON SPREAD FOOTINGS
- FSL ARCHITECTS—SUPERIOR VENDALL @ 3704 E 14TH KCMO—DESIGN 3200 FT<sup>2</sup> METAL BUILDING ADDITION
- GROUP 3 COLLABORATIVE—FIRST CHOICE OFFICE BLDG @ GARDNER, KS—1-STORY TIMBER FRAME OVER BASEMENT
- GROUP 3 COLLABORATIVE—M-HAUS @ 1542 MADISON KCMO—DESIGN 2ND STORY ON TOP OF EXISTING 1-STORY HOUSE
- GROUP 3 COLLABORATIVE—POUR BOY OIL, KCMO—1-STORY TIMBER TRUSS STORE W/ CMU & PRECAST CARWASH
- GROUP 3 COLLABORATIVE—GENESIS VALLEY @ GARDNER, KS—OPEN-FRAME TIMBER SHELTER IN OUTDOOR PARK
- HIGHWOODS PROPERTIES—JACK STACK BBQ @ 47TH & WYANDOTTE—REMOVE BEARING WALL, RE-FRAME ROOF
- ICL CHEMICAL PLANT @ LAWRENCE, KS—FOUNDATION DESIGN & STEEL BUILDING UPGRADE FOR 45'-0" TALL ACID TANK
- LG BARCUS & SONS—WALNUT CREEK RIVER @ PLATTE COUNTY—DESIGN RETAINING WALLS EACH SIDE OF RIVER BANK
- LG BARCUS & SONS—RIVER OAKS APTS @ PLAZA—DESIGN PIN PILING TO SUPPORT NEW MULTI-STORY STAIR SHAFTS
- LG BARCUS & SONS—RANDOLPH, MO—DESIGN STEEL REPLACEMENT FOR EXISTING TIMBER BRIDGE
- OMEGA CONCRETE—CHILDREN'S MERCY HOSPITAL KCKS—DESIGN & DETAIL PERIMETER PRECAST WALLS
- PLATTE COUNTY PUBLIC WORKS—DESIGN NEW MATERIALS STORAGE BIN FACILITY
- STUPPY GREENHOUSE MANUFACTURERS—OLD DOMINION UNIVERSITY @ NORFOLK, VA—DESIGN 3 FRAMED GREENHOUSES TO GROW ORCHIDS
- STUPPY GREENHOUSE MANUFACTURERS—DESIGN FOUNDATIONS FOR ALUMINUM GREENHOUSE IN WHEELWRIGHT, KY
- TEVIS ARCHITECTURAL GROUP—GOLF CLUB OF KANSAS @ LENEXA—3-STORY STEEL FRAME BUILDING
- TIMBER GRID—WYANDOTTE COUNTY PARK—DESIGN "TIMBER GRID" RETAINING WALLS AROUND EXISTING LIBRARY BUILDING
- WHP TRAINING TOWERS—DESIGN FOUNDATIONS FOR FIRE-TRAINING TOWER IN St. AUGUSTINE, FL

### 2005 PROJECTS

- ARROWHEAD CONTRACTING—THE METROPOLITAN @ 45TH & MADISON, KCMO—SHEET PILE SHORING
- BRYANT BUILDING @ 11TH & MAIN, KCMO—CUT FOUR 10'-0" WIDE LOUVER HOLES IN 24-STORY WALL
- BURNS McDONNELL ENGINEERING—HERTZ RENTAL FACILITY @ CUTLER RIDGE, FL—LARGE PMB BUILDING W/ STUD CANOPIES & WASHRACK
- CITY OF LEAVENWORTH—STRUCTURAL UPGRADES FOR THE SMALL AIRPLANE CANOPY-GARAGE @ LEAVENWORTH AIRPORT
- DIRECT MEDIA—DESIGN FIXES FOR AGING "TIMBER GRID" LOOSE-COBBLE RETAINING WALL @ GREENWICH, CT
- ENTERPRISE INTERIORS—SOUTHPARK MEDICAL OFFICE BLDG—METAL STUD ROOF AND WALL DESIGN—OLATHE, KS
- FOY CONSULTING & ENGINEERING—ISLETA ELEMENTARY SCHOOL @ ISLETA, NEW MEXICO—DESIGN CMU WALLS & FDNS
- FSL ARCHITECTS—4TH & LOCUST, KCMO—REDESIGN INTERIOR FLOOR STRUCTURE, DESIGN CANOPY
- FSL ARCHITECTS—KIM SCOTT RESIDENCE 5249 MISSION RD—2-STORY HOUSE ADDITION
- GROUP 3 COLLABORATIVE—MCMILLAN @ 4305 COLEMAN RD, KCMO—COMPLETE PLANS FOR 2-STORY HANDICAP HOUSE
- GROUP 3 COLLABORATIVE—GARDNER PROFESSIONAL BUILDING—1-STORY TIMBER FRAME W/ WALKOUT BASEMENT
- HOEFER WYSOCKI ARCHITECTS—RETAIL CENTER @ PITTSBURG, KS—1-STORY CMU W/ BAR JOIST ROOF & STEEL CANOPY
- OWEN GAHAGEN—PARKVILLE RESIDENCE—ELEVATED POOLSIDE PORCH SLAB USING REINFORCED CONCRETE
- POSTEN STUDIO ADDITION—1-STORY WOOD GARAGE WITH 3-D WOOD TRUSS—KCMO
- PURDUM CONSTRUCTION—SOUTHPARK MEDICAL OFFICE BLDG—DESIGN EXTERIOR CANOPIES USING GLULAM BEAMS
- ROSEHILL GARDENS—10156 HIGHLAND LANE @ OLATHE, KS—DESIGN VARIOUS LANDSCAPING RETAINING WALLS
- SCHUBERT ARCHITECTURE—NATIONAL WEATHER SERVICE—FOUNDATION FOR 120'-0" TALL COMMUNICATION TOWER
- STUPPY GREENHOUSE MANUFACTURERS—USDA INSECTORY GREENHOUSE @ FORT DETRICK, MD—ALUMINUM GREENHOUSE W/ 3-D TRUSS
- SUBSURFACE CONTRACTORS, INC.—KIRKWOOD CHURCH SHORING—St. LOUIS, MO
- TEVIS ARCHITECTURAL GROUP—KC NORTH COMMUNITY CENTER—1-STORY METAL FRAME BUILDING ADDITION
- TEVIS ARCHITECTURAL GROUP—CREEKMOOR GOLF CLUBHOUSE @ RAYMORE, MO—1-STORY TIMBER FRAME
- TEVIS ARCHITECTURAL GROUP—KERRY SWEET'S @ GARDNER, KS—CATWALK EXTENSION
- URBAN ARCHITECTURAL STUDIO—SALVATION ARMY "HARBOR LIGHT" @ KANSAS CITY, KS—3 STEEL-FRAME BUILDINGS



# STRUCTURAL ENGINEERS

## SELECTED CEOSE PROJECTS

### 2004 PROJECTS

- EFFECTIVE PROJECT CORPORATION—PURIFICATION BUILDING—OAK RIDGE, TN
- EFFECTIVE PROJECT CORPORATION—DESIGN OF 40' CANTILEVER SMOKESTACK—OAK RIDGE, TN
- EFFECTIVE PROJECT CORPORATION—WATER TREATMENT PLANT & GENERATOR BUILDING—COLUSSA, CA
- FOLEY COMPANY—KANSAS CITY STAR BUILDING (PIPE HANGING)—KANSAS CITY, MO
- LG BARCUS & SONS—I-35/LIBERTY BRIDGE RETAINING WALL—LIBERTY, MO
- PROFESSIONAL ENGINEERS, LLC—T-MOBILE TOWERS—SEVERAL LOCATIONS NATIONALLY
- RAFAEL ARCHITECTS—AVINEDA DE CESAR CHAVEZ RETAINING WALL—KANSAS CITY, MO
- SCHUBERTH ARCHITECTURE INC.—USA BABY (RTU SUPPORT)—OVERLAND PARK, KS
- SHAW HOFSTRA & ASSOCIATES—SHERIDAN'S FROZEN CUSTARD—SEVERAL LOCATIONS NATIONALLY
- SHAW HOFSTRA & ASSOCIATES—BACKYARD BURGER—OLATHE, KS

### 2003 PROJECTS

- AMBASSADOR STEEL—UHS (NEW LIFE SCIENCE BUILDING) REINFORCING DETAILING—KANSAS CITY, MO
- BRADLEY ASSOCIATES—MONACO BUILDING WITH TIED ARCH ROOF STRUCTURE—KANSAS CITY, MO
- CITY OF LEAVENWORTH—FIRE ESCAPE STAIR FOR CITY HALL—LEAVENWORTH, KS
- ENTERPRISE INTERIORS—4715 W. 40 HWY ELEVATED MEZZANINE & WALKWAY DESIGN — BLUE SPRINGS, MO
- EXCEL CONSTRUCTORS & GUY GRONBERG ARCHITECTS—DISCOVER VISION CENTER—OLATHE, KS
- HMN ARCHITECTS—SILVERCREST ADULT LIVING CENTER—OVERLAND PARK, KS
- LG BARCUS & SONS—ARROWHEAD PAPER MACHINE BUILDING (PILE SHORING & FOUNDATION)—CAPE GIRARDEAU, MO
- LG BARCUS & SONS—INDEPENDENCE BRIDGE SHORING—KANSAS CITY, MO
- MCGOWN & GORDON—BUSINESS TECHNOLOGY ASSOCIATION COMPLEX STRUCTURAL REVIEW—KANSAS CITY, MO
- PEARSON, KENT, MCKINLEY, & RAAF—SHAWNEE MISSION NORTH HIGH SCHOOL (SUPPORT FRAME FOR RTU)
- ROBERT SANDERS & ASSOCIATES—TOMAHAWK OFFICE BUILDING—OVERLAND PARK, KS
- SHAW HOFSTRA & ASSOCIATES—GOODYEAR AUTO SERVICE CENTER—LENEXA, KS
- STRUCTURAL STEEL CONTRACT SERVICES—MU BREWER FIELDHOUSE STEEL DETAILING—COLUMBIA, MO
- TEVIS & LOW ARCHITECTURAL GROUP—M291 CARWASH—INDEPENDENCE, MO

### 2002 PROJECTS

- BUTLER MANUFACTURING—IRON BRIDGE CORPORATE CENTER—COLLEGEVILLE, PA
- BUTLER MANUFACTURING—GALESBURG FIRE STATION—GALESBURG, IL
- BUTLER MANUFACTURING—BIHLER OF AMERICA OFFICE BUILDING—ALPHA, NJ
- BRADLEY & ASSOCIATES—COMPREHENSIVE MENTAL HEALTH—INDEPENDENCE, MO
- EFFECTIVE PROJECT CORPORATION—WHITEMAN AFB SURVEILLANCE BUILDING—KNOBNOSTER, MO
- ENTERPRISE INTERIORS—MAPLE CREST PROFESSIONAL BUILDING FORENSIC REVIEW—LIBERTY, MO
- EXCEL CONSTRUCTORS—ST. MARKS PARISH STRUCTURAL REVIEW & FOUNDATION DESIGN—INDEPENDENCE, MO
- HNTB ARCHITECTS—COTTEY COLLEGE PHASE 2 RENOVATION—NEVADA, MO
- JE DUNN—STRUCTURAL AND CONSTRUCTABILITY REVIEWS FOR VARIOUS BUILDINGS (NEW & RENOVATION)
- LG BARCUS & SONS—STEAM TUNNEL EXCAVATION (SHORING INVESTIGATION)—LAWRENCE, KS
- LG BARCUS & SONS—HENRY COUNTY MEDICAL CENTER (PILE RETAINING WALL)—PARIS, TN
- LG BARCUS & SONS—NEW MEMPHIS ARENA (PILE RETAINING WALL)—MEMPHIS, TN
- MARTIN & HARPER—THOMPSON BARN RENOVATION—LENEXA, KS
- MIDWEST MECHANICAL CONTRACTORS—KEEBLER COOLER—KANSAS CITY, KS
- NEEDHAM & ASSOCIATES—HILL AFB C-130 CORROSION FACILITY—HILL AFB, UT
- PEARSON, KENT, MCKINLEY, & RAAF—SHAWNEE MISSION SOUTH HIGH SCHOOL (SUPPORT FRAME FOR RTU)
- RODRIGUEZ & ASSOCIATES—UNIVERSITY OF HEALTH SCIENCES (NEW LIFE SCIENCE BUILDING)—KANSAS CITY, MO
- RAFAEL ARCHITECTS—ST. MARGARET'S CATHOLIC CHURCH—LEE'S SUMMIT, MO
- RAFAEL ARCHITECTS—VINE STREET LOFTS—KANSAS CITY, MO
- RAFAEL ARCHITECTS—CITY VISION MINISTRIES NEW ELEVATOR SHAFT DESIGN—KANSAS CITY, KS
- STEEL FIT CONSTRUCTION SERVICES—O'NEILL HONDA RENOVATION (CONNECTION DESIGN)—OVERLAND PARK, KS
- STRUCTURAL STEEL CONTRACT SERVICES—MU VIRGINIA HOUSING STAIR DESIGN—COLUMBIA, MO